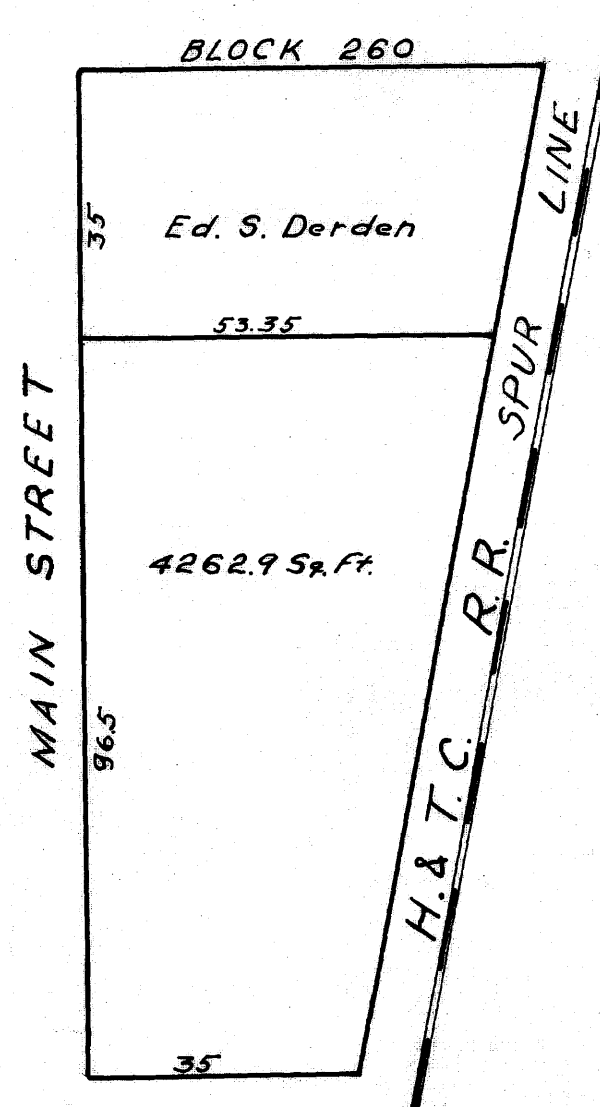
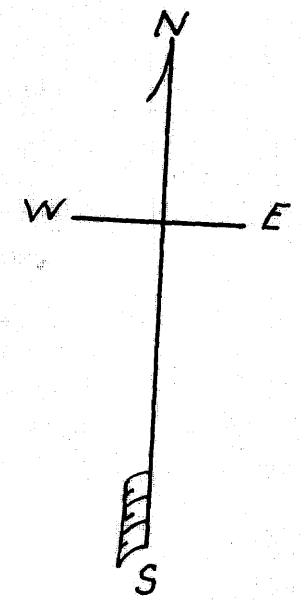


BRYAN, CITY OF, (OLD TOWN SITE)
 BLOCK #268
 CITY OF BRYAN
 D.R. 50 Pg. 411 9-25-'11
 Scale: 1"=25'



(FANNIN) 28TH STREET

Beginning at the S.E. corner of a tract fronting 35.0' on Main St. heretofore sold by City to Ed. S. Derden (See D.R. 39 Pg. 47) thence West along South side of said tract 53.35' to N.W. corner of said Derden tract on the East line of Main St.; thence South along the East line of Main St. 96.5' and corner on iron pin (this line is run in the same variation of compass as the Main St. line of Block 268) thence East parallel to the South line of Derden tract 35'; thence in a Northerly direction to the place of beginning. (4262.9 sq. ft.)



on base
 UD
 color